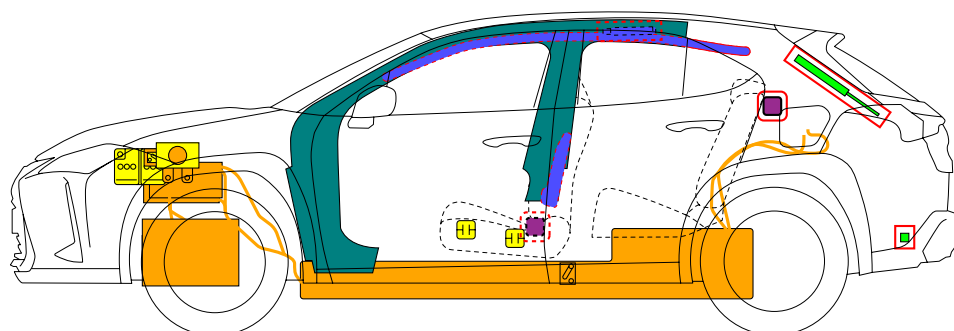
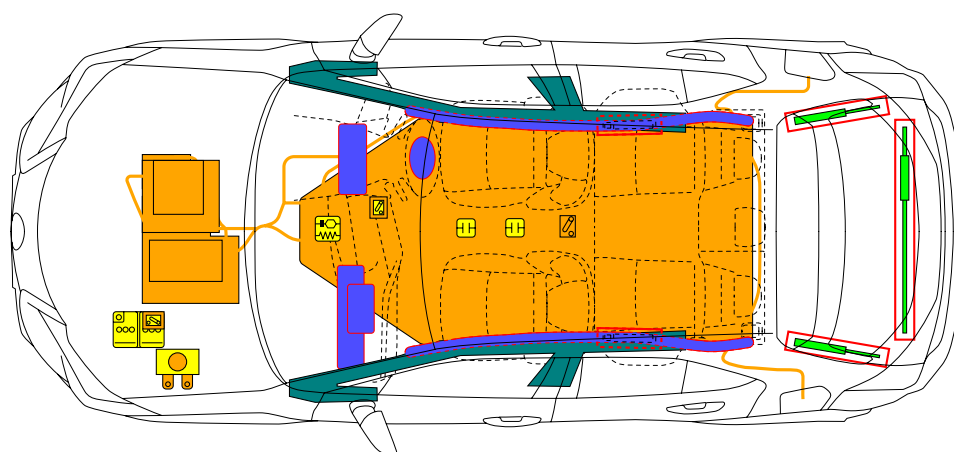
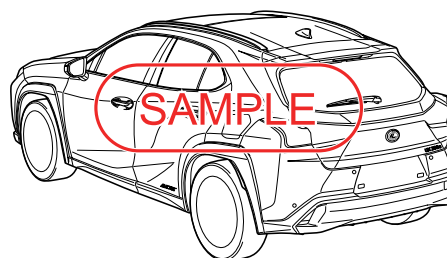
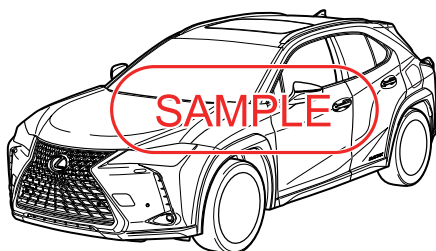




LEXUS UX300e

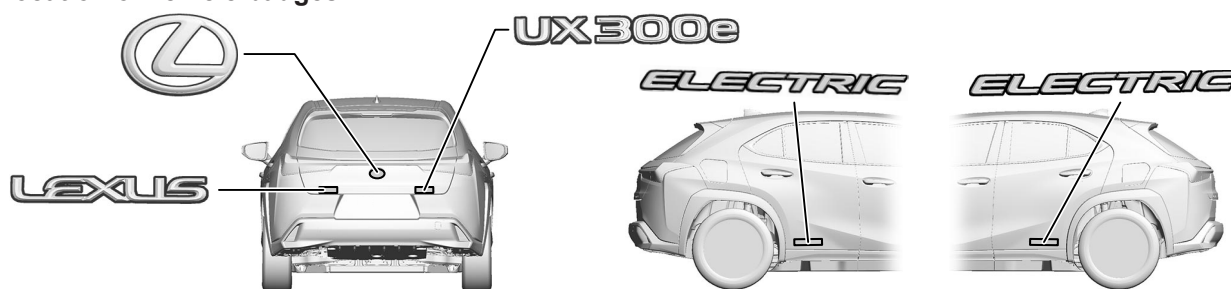
2020-8



	Airbag		Stored gas inflator		Seat belt pretensioner		SRS control unit		Pedestrian protection active system
	Automatic rollover protection system		Gas strut / Preloaded spring		High strength zone		Zone requiring special attention		
	Battery low voltage		Ultra capacitor, low voltage		Fuel tank		Gas tank		Safety valve
	High voltage battery pack		High voltage power cable / component		High voltage disconnect		Fuse box disabling high voltage system		Ultra capacitor, high voltage
	Low voltage device that disconnects high voltage								
ID No.		Version No.		Version date		Page			
UXEV10		01		08 / 2020		1 / 4			

1. Identification / Recognition

■ Location of vehicle badges

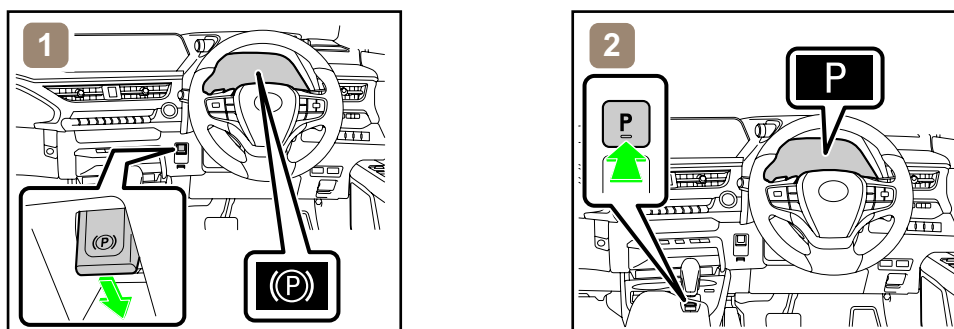


■ Energy source: Lithium-ion battery



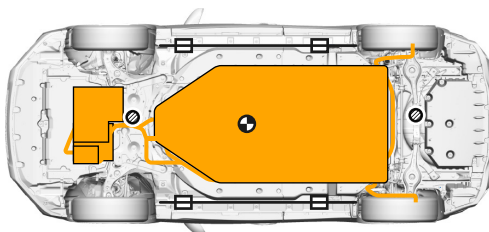
2. Immobilisation / Stabilisation / Lifting

■ Completely immobilize the vehicle



1. Chock the wheels and engage the parking brake. 2. Press the P position switch to select park (P).

■ To stabilize the vehicle, place cribbing such as wooden blocks at the four points under the front and rear pillars.



Jack Position



Support Position



Vehicle Center of Gravity



Do not place cribbing such as wooden blocks or rescue air lifting bags under the high voltage power cables. Doing so may result in fire, or electric shock.

3. Disable direct hazards / Safety regulations



If the vehicle is not completely shut off, the vehicle may start to move.

■ If any of the following systems are required to be operated, operate them BEFORE disconnecting the battery.

Power door lock

Power window

Moon roof

Power back door

Power tilt and telescopic steering

Power seat

Electronic shift lever

Electric parking brake

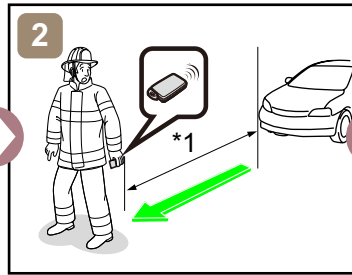
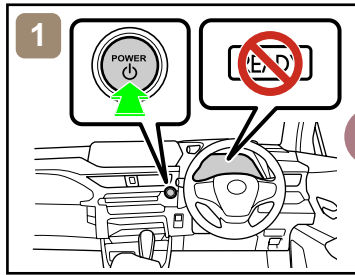
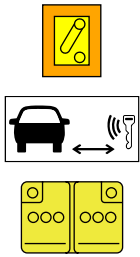


When the 12 V battery is disconnected, electrical components cannot be operated.

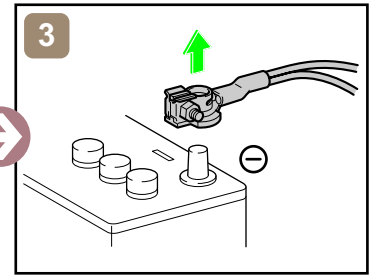
ID No.	Version No.	Version date	Page
UXEV10	01	08 / 2020	2 / 4

■ Perform procedure 1 or 2 to completely shut off the vehicle.

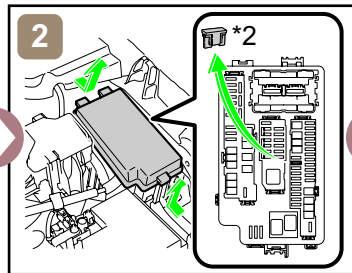
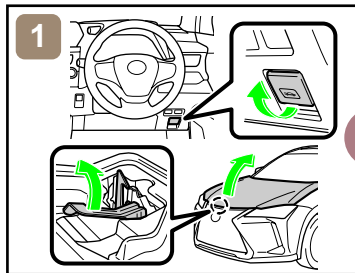
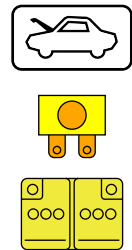
<Procedure 1>



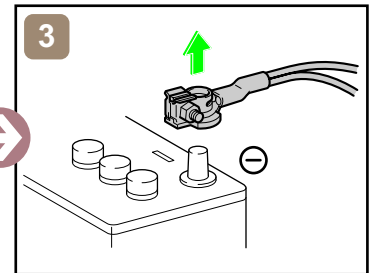
*1: 5 m (16.4 ft) or more



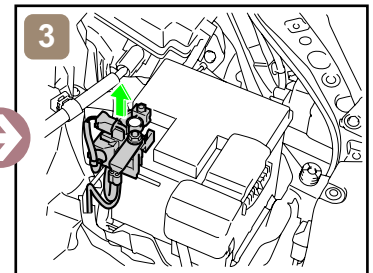
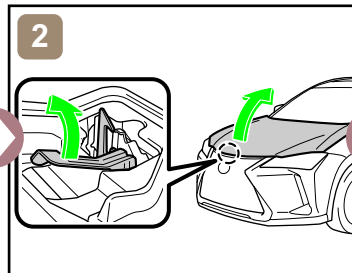
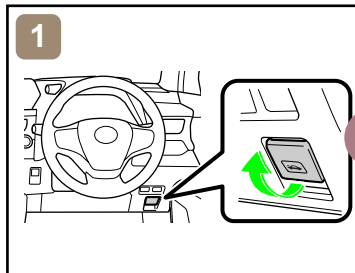
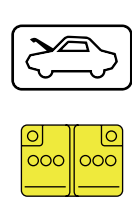
<Procedure 2>



*2: IG2-MAIN FUSE (15 A BLUE)

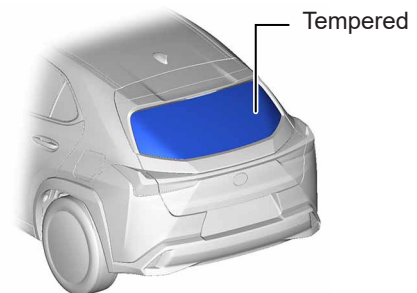
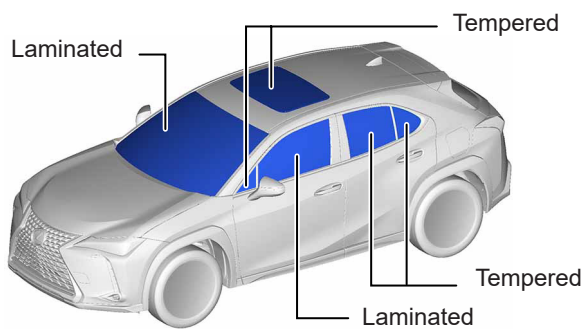


■ Access to 12 V Battery



4. Access to the occupants

■ Window Glass



5. Stored energy / Liquids / Gases / Solids



High Voltage Li-ion Battery



12 V Battery

ID No.	Version No.	Version date	Page
UXEV10	01	08 / 2020	3 / 4



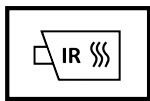
- Always wear appropriate personal protective equipment (PPE) when dealing with any of these items.
- Never breach or remove the battery assembly cover under any circumstances, including fire. Doing so may result in serious injury or death from severe burns or electric shock.

6. In case of fire



USE COPIOUS AMOUNTS OF WATER

If it is difficult to apply copious amounts of water to the high voltage battery, it is recommended to allow the high voltage battery to burn itself out.



RE-IGNITION POSSIBLE !

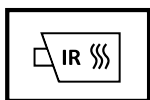
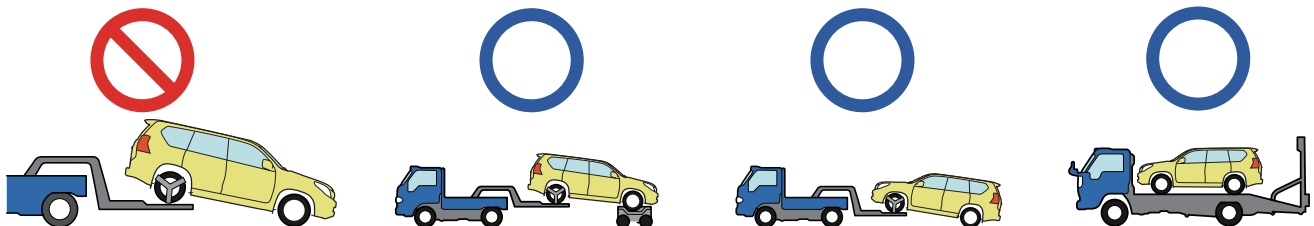


7. In case of submersion



Do not touch any of the high-voltage components or cables, including the service plug, while the vehicle is submerged. Doing so may result in electric shock.
Work on the vehicle only after the vehicle has been pulled out of the water.

8. Towing / Transportation / Storage



RE-IGNITION POSSIBLE !

Store the vehicle at a safe distance (15 m (49.2 ft) or more) from other vehicles.

9. Important additional information

For further details, please refer to "Emergency Response Guide".
<http://www.toyota.co.jp/#####/>

	ID No.	Version No.	Version date	Page
	UXEV10	01	08 / 2020	4 / 4